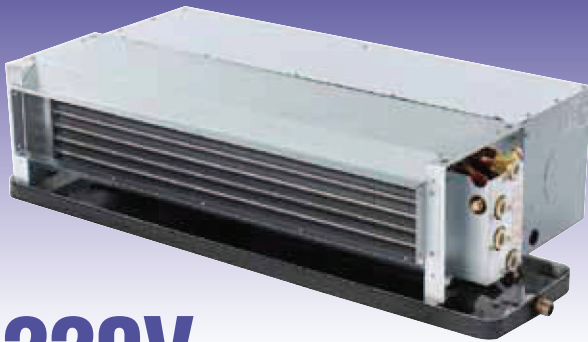


Ceiling Recessed Model-Standard Model
3-Row Cooling, 1-Row Heating

SRC-2SW-DC2-DRC
-Z/P/PW/PC

SRC-2SW-DC2-DRE
-Z/P/PW/PE



220V

Specification

| Unit Size | | 300 | 400 | 600 | 800 | 1000 | 1200 | 1400 |
|----------------------------|----|---|------|------|------|------|------|------|
| Air Volume l/s | H | 124 | 172 | 245 | 285 | 394 | 508 | 544 |
| | M | 107 | 141 | 201 | 242 | 332 | 418 | 467 |
| | L | 84 | 108 | 155 | 177 | 257 | 320 | 345 |
| Cooling Capacity KW | SH | 1.3 | 2.0 | 2.8 | 3.5 | 4.3 | 5.6 | 6.2 |
| | TH | 1.5 | 2.6 | 3.8 | 4.8 | 5.5 | 7.3 | 8.2 |
| Heating Capacity KW | | 3.9 | 5.7 | 7.9 | 9.5 | 12.4 | 15.9 | 17.3 |
| Water Flow l/s | | 0.08 | 0.13 | 0.18 | 0.24 | 0.27 | 0.36 | 0.4 |
| W.P.D. kPa | | 2 | 6 | 13 | 26 | 6 | 11 | 15 |
| Input Power W | | 49 | 65 | 97 | 120 | 158 | 192 | 235 |
| Running Current A | | 0.22 | 0.30 | 0.44 | 0.55 | 0.72 | 0.87 | 1.07 |
| Noise dB(A) | H | 45.0 | 42.5 | 46.5 | 46.5 | 49.5 | 47.5 | 51.0 |
| | M | 41.0 | 38.0 | 42.5 | 42.5 | 46.0 | 43.5 | 47.5 |
| | L | 36.0 | 32.0 | 37.5 | 35.5 | 41.0 | 37.5 | 40.5 |
| Weight kg (without plenum) | | 15.1 | 19.8 | 21.8 | 26 | 34.6 | 39.9 | 42.5 |
| Weight kg (with plenum) | | 17.7 | 23.2 | 26 | 31.3 | 40.5 | 46.2 | 50.5 |
| Holding Water Volume L | | 1.0 | 1.5 | 1.8 | 2.3 | 2.7 | 3.2 | 3.5 |
| Casing | | Galvanized Steel | | | | | | |
| Fan | | Galvanized sheet fabricated, Forward-Curved DIDW Fan | | | | | | |
| Motor | | 3-Speed, PSC with Capacitor Cap and Flexible Conduit | | | | | | |
| Power Source | | AC220V, 50Hz, Single Phase | | | | | | |
| Coil | | Slit Surfaced, Aluminum Finned Coil complete with Female Sockets at Inlet/Outlet Conn. And Air Vent | | | | | | |
| Operating Pressure | | Max 1700kPa (250psig) unless otherwise specified | | | | | | |
| Drain Pan | | Stainless Steel, SUS430 | | | | | | |

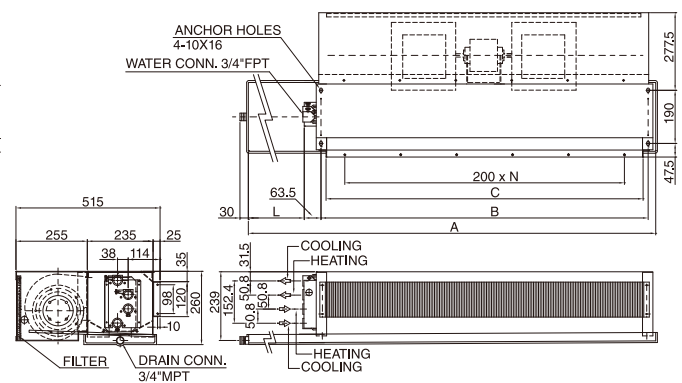
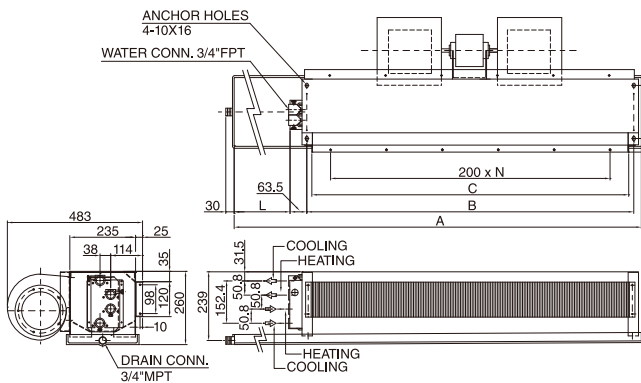
Note:

- Cooling capacity is based on DB24°C, WB17.8°C, EWT7°C, LWT12°C.
- Heating capacity is based on DB20°C, EWT60, same water flow as cooling.
- Cooling/Heating Capacity, Input Power, Running Current are based on H speed.
- Noise is measured at an anechoic chamber, 1m from the unit surface.
- Running current may change according to the conditions.
- Air volume is based on ESP 30Pa. without plenum and filter.

Dimensions

Without Plenum **SRC-2SW-DC2-DRC-Z** **SRC-2SW-DC2-DRE-Z**
SRC-2SW-DC2-DRC15-Z **SRC-2SW-DC2-DRE15-Z**
SRC-2SW-DC2-DRC24-Z **SRC-2SW-DC2-DRE24-Z**

With Plenum **SRC-2SW-DC2-DRC-P/PW/PC** **SRC-2SW-DC2-DRE-P/PW/PC**
SRC-2SW-DC2-DRC15-P/PW/PC **SRC-2SW-DC2-DRE15-P/PW/PC**
SRC-2SW-DC2-DRC24-P/PW/PC **SRC-2SW-DC2-DRE24-P/PW/PC**



| Unit Size | -Z/P/PW/PE/PC | | 15-Z/P/PW/PE/PC | | 24-Z/P/PW/PE/PC | | B | C | N | NO. OF FAN | NO. OF MOTOR |
|-------------------------|---------------|----|-----------------|-----|-----------------|-----|------|------|---|------------|--------------|
| | A | L | A | L | A | L | | | | | |
| SRC- 300-2SW-DC2-DRC(E) | 635 | 50 | 785 | 200 | 875 | 290 | 500 | 462 | 2 | 1 | 1 |
| SRC- 400-2SW-DC2-DRC(E) | 885 | 50 | 1035 | 200 | 1125 | 290 | 750 | 712 | 3 | 2 | 1 |
| SRC- 600-2SW-DC2-DRC(E) | 1020 | 50 | 1170 | 200 | 1260 | 290 | 885 | 847 | 4 | 2 | 1 |
| SRC- 800-2SW-DC2-DRC(E) | 1305 | 50 | 1455 | 200 | 1545 | 290 | 1170 | 1132 | 5 | 2 | 1 |
| SRC-1000-2SW-DC2-DRC(E) | 1490 | 50 | 1640 | 200 | 1730 | 290 | 1340 | 1302 | 6 | 3 | 2 |
| SRC-1200-2SW-DC2-DRC(E) | 1740 | 50 | 1890 | 200 | 1980 | 290 | 1590 | 1552 | 7 | 4 | 2 |
| SRC-1400-2SW-DC2-DRC(E) | 1920 | 50 | 2070 | 200 | 2160 | 290 | 1770 | 1732 | 8 | 4 | 2 |

Note:

- Left hand unit is shown.
- Furnish access door to service fan motor.
- Wiring works between motor and switch, and unit to power source by contractors.
- Unit shall be mounted horizontally.
- To prevent condensation, fan interlock valve shall be furnished so that water supply will be stopped when fan is off.