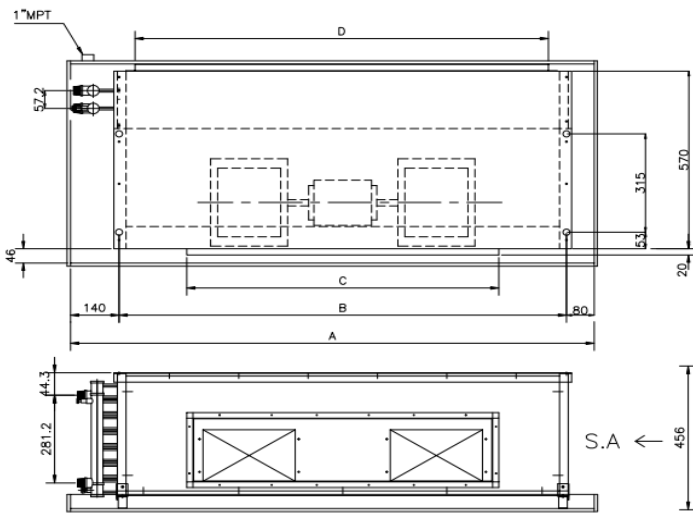


# ○MH Model Cooling Capaities - 4ROWS

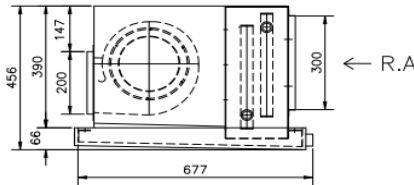
Entering Air Condition DB:24°C WB:17.8°C(RH=55%)					
MH	Water Flow L/sec	W.P.D kPa	Air vol.at 50Pa l/s	Cooling capaity at 7°C	
				SH kW	TH kW
204	0.5	11.9	310	4.2	6.4
	0.67	25		4.3	6.9
304	0.5	15.1	426	5.6	8.5
	0.67	30		5.8	9.2
404	0.5	3.2	650	7.8	10.6
	0.67	6		8.3	11.7
504	0.5	1.5	840	9.6	12.7
	0.67	7		10.3	14.3

NOTED : BASED ON "Hi" FAN-SPEED



NOTE:

- (1) LEFT HAND UNITS IS SHOWN UNLESS OTHERWISE SPECIFIED LEFT HAND PIPE CONNECTION FURNISHED.
- (2) FURNISH ACCESS DOOR TO SERVICE FAN MOTOR
- (3) WIRING WORKS BETWEEN MOTOR AND SWITCH AND UNIT TO POWER SOURCE BY CONTRACTORS
- (4) FILTER SECTION IS OPTIONAL COMPONENT



## ○Dimension

Model Size	Dimension(mm)				Coil Conn F	Number of		Net Weight (kg)
	A	B	C	D		Fan(s)	Motor(s)	
MH-204	810	590	450	550	1" MPT	1	1	46
MH-304	990	770	600	730	1" MPT	1	1	67
MH-404	1330	1110	750	1070	1-1/4" MPT	2	1	75
MH-504	1510	1290	900	1250	1-1/4" MPT	2	1	98

Casing	Galvanized Steel
Fan	Galvanized Steel fabricated, Forward-Curved DIDW Fan
Motor	3-Speed ,PSC with Capacitor Cap and Flexible Codut
Power Source	AC 220V, 50Hz/60Hz , Single Pahse
Coil	Slit Surfased,Aluminm Finned Coil complete with Female Sockets at inlet/Outlet Conn,And Air Vent
Operating Pressure	Max 1700kPa(250psig) unless otherwise pecified
Drain Pan	Stainless Steel,SUS430