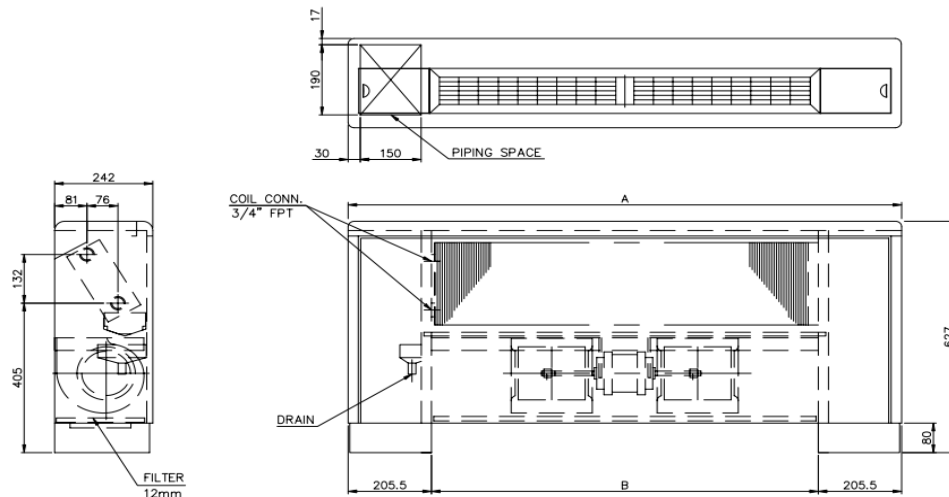


TF-SW Model Cooling Capaities

Entering Air Condition DB:24°C WB:17.8°C(RH=55%)					
TC	Water Flow L/sec	W.P.D kPa	Air vol.at 50Pa l/s	Cooling capaity at 7°C	
				SH	TH
				kW	kW
300	0.15	5.6	152	1.76	2.25
	0.20	9.2		1.86	2.46
400	0.20	13.1	183	2.34	3.17
	0.25	19.3		2.43	3.37
600	0.20	15.2	283	3.22	4.24
	0.30	30.7		3.47	4.77
800	0.25	29.0	331	3.97	5.43
	0.30	39.7		4.11	5.72
1000	0.40	11.3	436	5.12	6.73
	0.50	16.6		5.33	7.17
1200	0.40	13.2	567	6.30	8.21
	0.50	19.5		6.60	0.80
1400	0.40	14.7	663	7.10	9.21
	0.55	25.4		7.60	10.18

NOTED : BASED ON "Hi" FAN-SPEED



NOTE:

- (1) RIGHT HAND UNITS IS SHOWN UNLESS OTHERWISE SPECIFIED HAND PIPE CONNECTION FURNISHED.
- (2) FURNISH ACCESS DOOR TO SERVICE FAN MOTOR
- (3) WIRING WORKS BETWEEN MOTOR AND SWITCH AND UNIT TO POWER SOURCE BY CONTRACTORS

Dimension

Model Size	Dimension(mm)		Number of		Net Weight (kg)
	A	B	Fan(s)	Motor(s)	
TF-300	980	569	1	1	30
TF-400	1230	819	2	1	35
TF-600	1365	954	2	1	39
TF-800	1650	1239	2	1	48
TF-1000	1845	1434	3	2	54
TF-1200	2095	1684	4	2	62
TF-1400	2275	1864	4	2	68

Casing	Galvanized Steel with painted
Fan	Galvanized Steel fabricated, Forward-Curved DIDW Fan
Motor	3-Speed ,PSC with Capacitor Cap and Flexible Codut
Power Source	AC 220V, 50Hz/60Hz , Single Pahse
Coil	Slit Surfased, Aluminm Finned Coil complete with Female Sockets at inlet/Outlet Conn, And Air Vent
Operating Pressure	Max 1700kPa(250psig) unless otherwise pecified
Drain Pan	Stainless Steel, SUS430